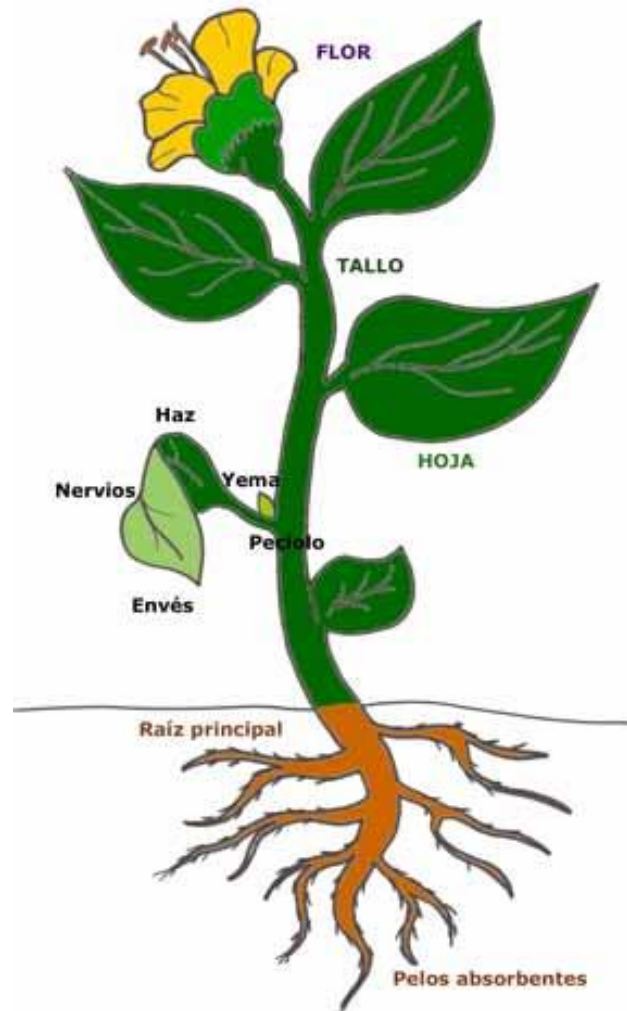


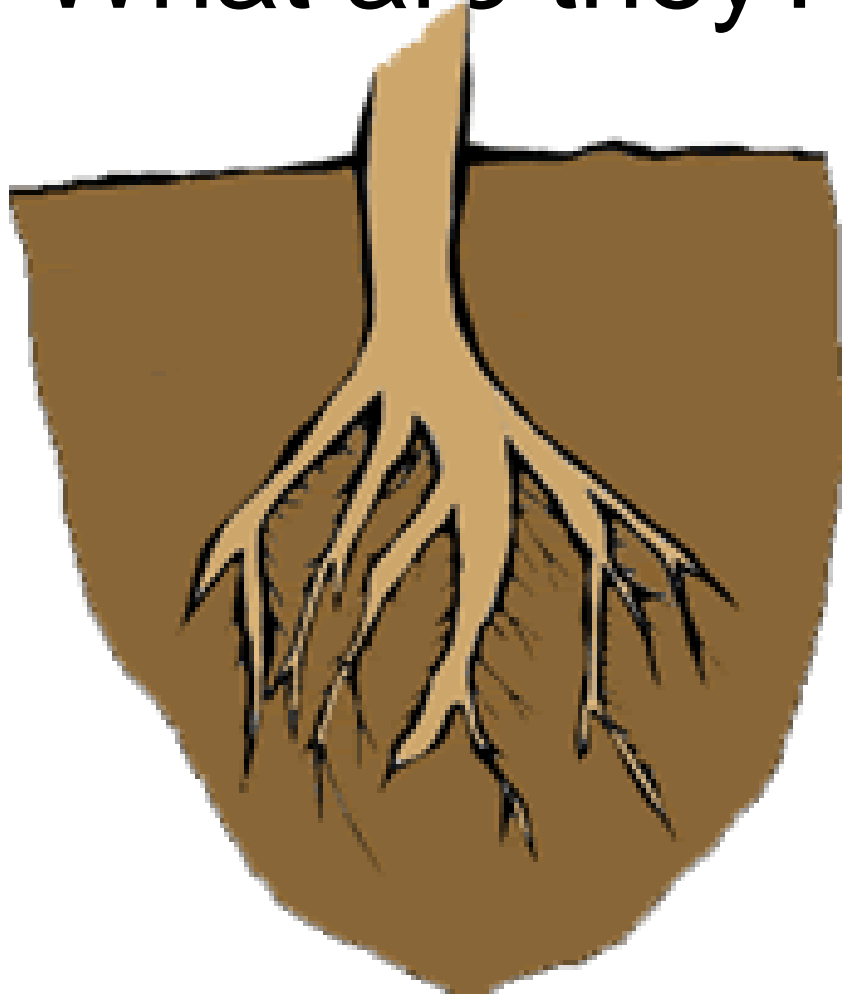
An aerial photograph of a vast, rolling landscape covered in vibrant green vegetation. The terrain consists of numerous gentle, undulating hills and valleys, creating a textured, wave-like appearance. In the upper portion of the image, a denser line of dark green trees marks the edge of a forest. The overall scene is bathed in soft, natural light, emphasizing the rich green hues of the plant life.

Plant Kingdom

Parts of a plant



What are they?



What are they for?

What is it ?



What is it for?





What is it?

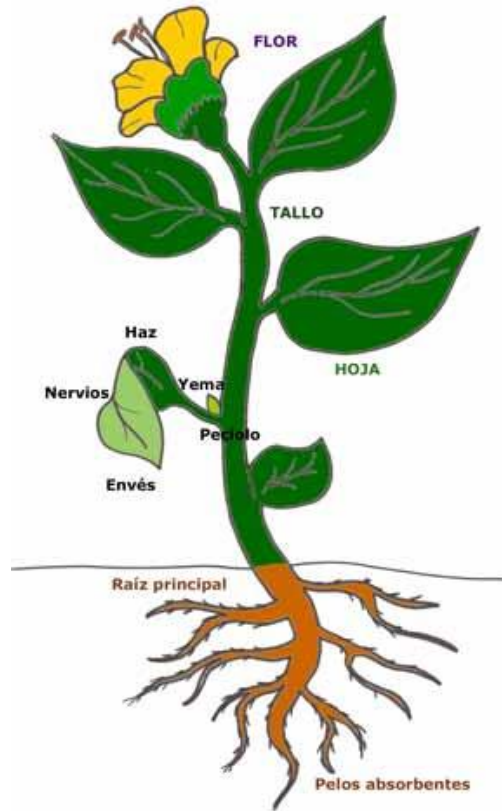
What is it for?

What is it?



What is it for?

Not all the plants are like this one



I belong to the flowering plants (Angiosperms)

Non flowering plants/trees or Gymnosperms



Ferns



Mosses





Mosses





Mosses



Which group does it belong to?



Which group does it belong to?



Which group does
it belong to?



Which group does it belong to?



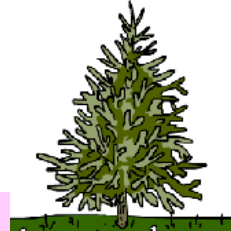



Which group does it belong to?



Which group does it belong to?



Mosses (and liverworts)	Ferns	Non flowering plants	Flowering plants
			
<p>No proper roots or stems.</p>	<p>They have stems, roots and leaves.</p>	<p>They have stems, roots and leaves</p>	<p>They have stems, roots and leaves</p>
<p>They make spores, not seeds.</p>	<p>They make spores, no seeds.</p>	<p>Very simple flowers. Seeds inside cones (no fruits)</p>	<p>They have flowers which turn into fruits with seeds inside.</p>

1. Which of the following does not belong to the plant kingdom? Moss, spider, fern, pine.
2. Do all plants have real roots?
3. Which differences are there between conifers and flowering plants?
4. Do mosses and ferns have something in common?
5. Do ferns and flowering plants have something in common?